

Welcome to  
Year 1's  
Meet the Teacher

2023 - 2024

1S

Mrs  
Smith

1Q

Mrs  
Quinton

# Staff

Mrs Smith – 1S' teacher

Miss Bladen – 1S' teaching assistant

Mrs Quinton – 1Q's teacher

Miss Allen – 1Q's teaching assistant

Mrs Cope – KS1 HLTA

# Communication

Teachers: your child's teacher will be available after school for any questions you may have – please do not hesitate to ask if you have questions or need clarity.

Teaching Assistants: some mornings the teaching assistants will be on the door in a morning to answer any questions or will pass on any messages to teachers.

# Home Time

If you are unable to collect your child at the end of the day.

Please call and let the office know who will be collecting your child and they will then pass the message onto us.

This will help make dismissing at home time easier and quicker.



# Communication

At St Andrew's we like to inform you of your child's successes within school and the way we can do that is through a phone app called 'Marvellous Me'.



All you need to do is download the phone app onto your phone.  
Fill in your correct login details.

Then you will receive messages, badges and activities that we send you to let you know what is happening at school.

To let us know you have read the message simply send us a 'high five' back. 😊



# Attendance

It is very important that your child attends school every day and arrives at school on time. Children with poor attendance will make poor progress because they will have gaps in their learning and will find it difficult to catch up. If children miss lots of school and have lots of gaps in their knowledge, their learning will become more difficult and it can be extremely upsetting for them.

# Uniform

Please ensure that your child is in the correct uniform especially the correct footwear.

No black trainers, that look like shoes are allowed.

No jewellery except for a watch and one small stud in each ear are allowed for health and safety reasons.

If you have any problems, speak to a member of staff.

# Uniform

- White blouse / shirt
- Blue cardigan / jumper
- Grey or black trousers / skirt / dress
- Black school shoes





# PE

Children need to have a PE kit so that they can take part in PE lessons.

PE is an important part of the curriculum.

Specialist teachers will lead one PE session a week.

Children will have PE on a Tuesday and Wednesday.

Please ensure children do not have earrings in on those days 😊

# PE Kit

- Blue shorts / leggings
- White top
- Pumps



# Timetable

Morning:

Phonics, English and Maths

Afternoon:

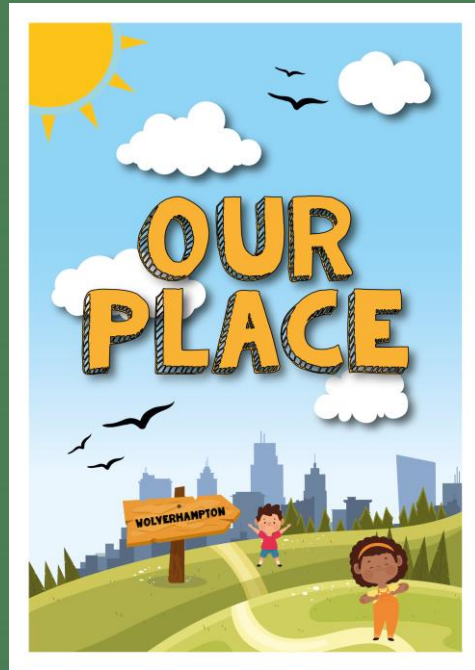
Handwriting/Spellings/Phonics, Science, PE, Topic  
(History, Geography, Computing, Art, DT, PSHE) RE



# Our Topics

In Year 1 we will be doing a topic a term.

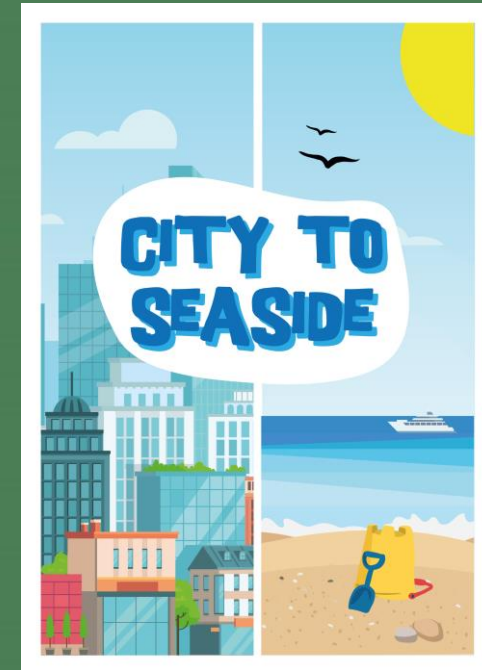
Autumn



Spring



Summer





# Homework

1. Home reading books
2. Creative Homework
3. Spellings

# Reading

1 book matched to their reading ability.

Your child will have their book change once a week as well as being heard read at school too.

Children should read every day.

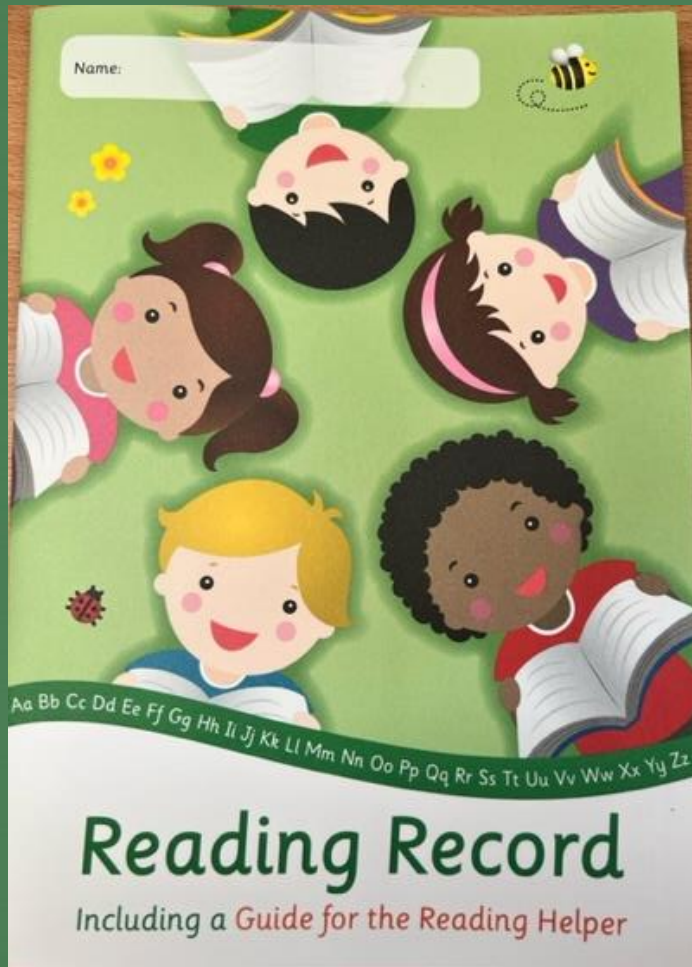
To help support your child please listen and encourage your child to read as much as possible as this increase their confidence and ability to read fluently.

# Reading Diary

Your child will bring home with their book a reading record. Please keep it safe and it needs to return to school every day in their reading folder.

Please fill in the reading record every time you or a family member listen to your child read so that there is a record of all the reading they are doing at home as well as school.

# Reading Diary



Date, book and page number	Comments <small>Colour in or tick the stars to show how much you enjoyed your reading</small>
18.09.23 The Zip Pg 2-3	Child read well and struggled with the word they.  ☆☆☆☆



# Creative Homework

## **YEAR 1** Creative Homework **OUR PLACE**

These learning tasks can be completed at any time over the next 3 weeks. Record your work in your homework book to show what you've been doing. You can draw, write or take photos to show what you've been up to.

**Homework is due: Friday 21<sup>st</sup> October 2022**

What changes can you see from Summer to Autumn?  
Make a list



Who is in your family?  
Draw, label and colour your family.



Go for a walk with an adult outside and collect Autumnal things like leaves, twigs, pine cones and acorns, etc.



Sketch the outline of your home.  
Think carefully about the shapes it has.



Name some places you like to visit in Wolverhampton.  
Draw and label them.



Draw how you get to school.  
Write a label to describe your picture



# Spellings

Weekly words

We will practise them in school and children need to practise them at home as well. Ensure your child can read the word as well as spell it.

Weekly tests on a Friday.

# Spellings

## spellings.

spellings	copy	look	cover	practise	spell
said					
she					
the					
some					
was					
the					
some					
said					
she					
was					

# Word Reading

Year 1 common exception words.

## Year 1

the	they	one
a	be	once
do	he	ask
to	me	friend
today	she	school
of	we	put
said	no	push
says	go	pull
are	so	full
were	by	house
was	my	our
is	here	
his	there	
has	where	
I	love	
you	come	
your	some	



# Help with Maths

Counting forwards and backwards to 10, 20 and 50.

Counting in 2s, 5s and 10s.

Number bonds to numbers within 10 and 20.

Reading, writing and ordering numbers to 50.

Naming and describing 2D and 3D shapes.

Recognising coins.

# Help with Reading

Read lots of books (magazines, articles, packets, signs, brochures, etc)

Read out loud

Talk about what they have read

Answer questions about what they have read

Name and describe the characters

# Help with Writing

Sitting letters on the line

Using upper case and lower case letters correctly

Forming letters correctly

Spelling words correctly

Aa Bb Cc Dd Ee Ff Gg Hh Ii Jj Kk Ll Mm Nn  
Oo Pp Qq Rr Ss Tt Uu Vv Ww Xx Yy Zz

# Thank you

Thank you for your continued support.

If any of your questions have not been answered,  
please stay and have a quick chat with us.

We wish you a lovely evening 😊